

Архангельск (8182)63-90-72
Астана (7172)727-132
Астрахань (8512)99-46-04
Барнаул (3852)73-04-60
Белгород (4722)40-23-64
Брянск (4832)59-03-52
Владивосток (423)249-28-31
Волгоград (844)278-03-48
Вологда (8172)26-41-59
Воронеж (473)204-51-73
Екатеринбург (343)384-55-89
Иваново (4932)77-34-06

Ижевск (3412)26-03-58
Иркутск (395)279-98-46
Казань (843)206-01-48
Калининград (4012)72-03-81
Калуга (4842)92-23-67
Кемерово (3842)65-04-62
Киров (8332)68-02-04
Краснодар (861)203-40-90
Красноярск (391)204-63-61
Курск (4712)77-13-04
Липецк (4742)52-20-81
Киргизия (996)312-96-26-47

Магнитогорск (3519)55-03-13
Москва (495)268-04-70
Мурманск (8152)59-64-93
Набережные Челны (8552)20-53-41
Нижний Новгород (831)429-08-12
Новокузнецк (3843)20-46-81
Новосибирск (383)227-86-73
Омск (3812)21-46-40
Орел (4862)44-53-42
Оренбург (3532)37-68-04
Пенза (8412)22-31-16
Россия (495)268-04-70

Пермь (342)205-81-47
Ростов-на-Дону (863)308-18-15
Рязань (4912)46-61-64
Самара (846)206-03-16
Санкт-Петербург (812)309-46-40
Саратов (845)249-38-78
Севастополь (8692)22-31-93
Симферополь (3652)67-13-56
Смоленск (4812)29-41-54
Сочи (862)225-72-31
Ставрополь (8652)20-65-13
Казахстан (772)734-952-31

Сургут (3462)77-98-35
Тверь (4822)63-31-35
Томск (3822)98-41-53
Тула (4872)74-02-29
Тюмень (3452)66-21-18
Ульяновск (8422)24-23-59
Уфа (347)229-48-12
Хабаровск (4212)92-98-04
Челябинск (351)202-03-61
Череповец (8202)49-02-64
Ярославль (4852)69-52-93

<https://omer.nt-rt.ru> || orw@nt-rt.ru



CAR PARKING LIFT
WITHOUT PEOPLE
ON BOARD

MOVE 30



MOVE 30 N



MOVE 30 N IS A PLATFORM

that runs on two opposing columns that can easily be installed, even in places which do not allow for direct securing to the walls.





THE VEHICLE CAN BE PARKED

on the platform facing in either direction,
forward or back, without affecting the platform
balance at all. Moreover, the platform is certified
for use up to a height of 11 meters.



THE PLATFORM

is composed of an extremely resistant base structure and no points are subject to bending even though the weight bearing capacity of 3,000 Kg. The relative stability makes this unit extremely safe and easy to drive the vehicle onto the platform.



MOVE 30 N ALSO

has a torsion bar system that prevents the vehicle weight from putting the platform out of balance. Moreover, it ensures greater safety while the platform is moving. The important fact is that the torsion bar slides on a rack which is a self-contained element and thus does not affect the column structure.



THE MECHANICAL SYSTEM

locking the platform to the floor is of vital importance. Operated by a hydraulic piston, it ensures perfect platform safety, connecting the shoulder to the piston and preventing untimely movement while the vehicle is being parked on the platform itself.

Moreover, when the connection is made, the entire hydraulic system can be set at rest, safeguarding it and extending its lifespan.



Detail of floor level mechanical locking device.





WHEN NEEDED,

it is possible to add fixed or mobile protection guards directly on the platform, thus ensuring greater safety while the vehicle is being moved.



THE MACHINE

is supplied with shims/beams securing it to the nearest wall and ensuring utmost stability and safety. The concept of safety is the common denominator in all O.M.E.R. S.p.A. products.

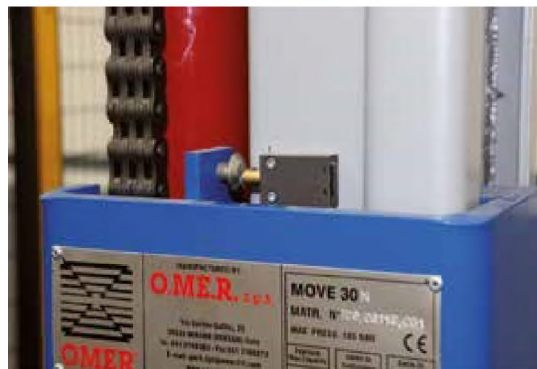


MOVE 30 N

has a piston (manufactured by O.M.E.R. S.p.A.) with chain (ratio 1:2) so the travel vs. the length of the shaft can be doubled. The top of the piston holds a pulley over which a chain slides; it is protected by a metal plate which prevents the chain from leaving its housing.

MOVE 30 N

has different limit switch systems. The stop limit switch stops the platform at the level indicated and ensures that it is safe to embark or disembark.



ANOTHER LIMIT

switch serves an extremely important function: deceleration. It ensures that the platform arrives at the desired level gently, without any abrupt movement.

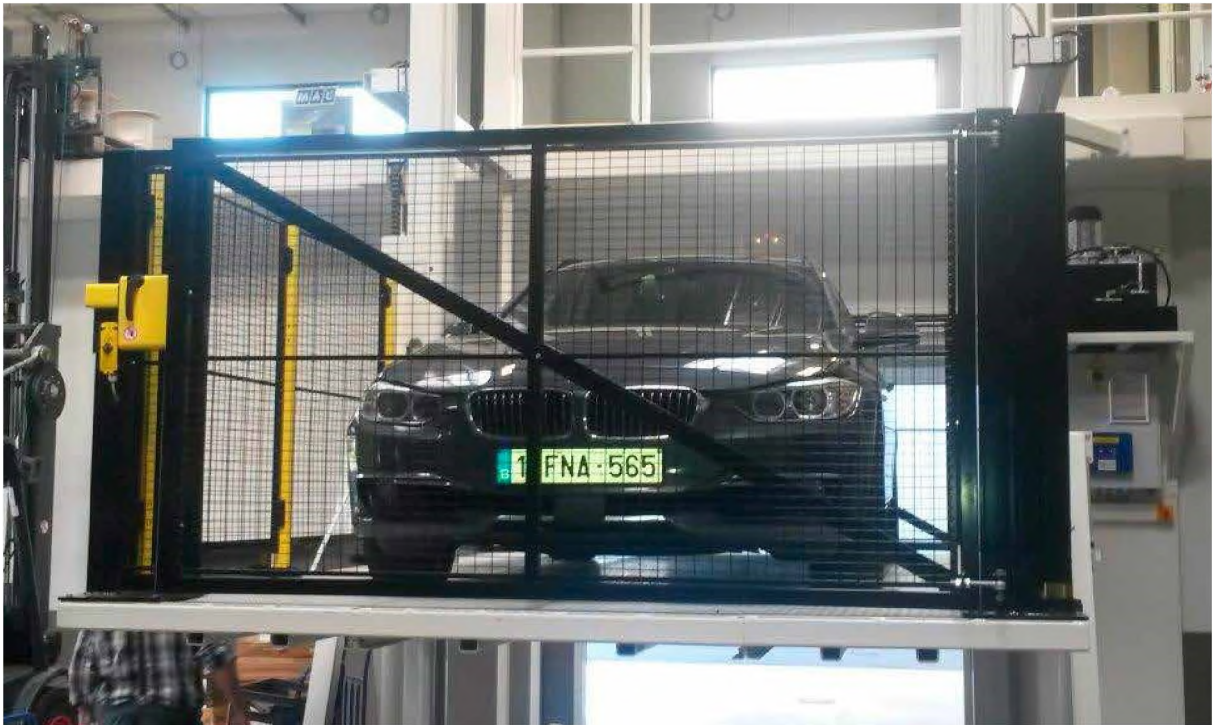


THE MOVE 30 N

management and control assembly is quite compact and takes up very little space. The electric motor is installed over the oil tank and the electrical panel is installed to the side so that all parts allow for quick easy access for functional maintenance.

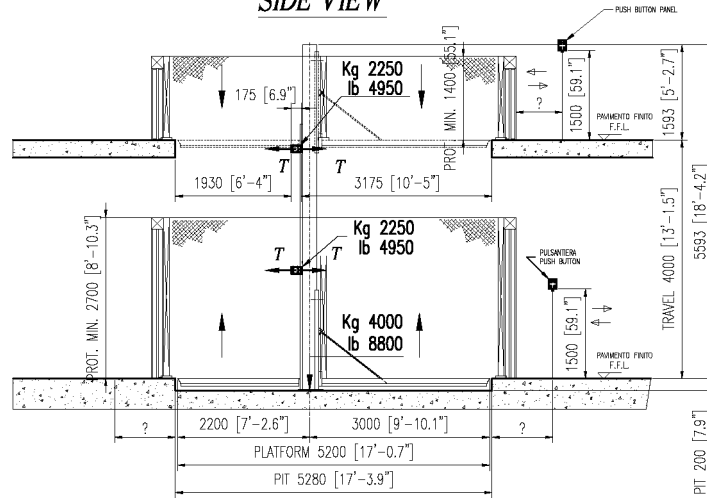




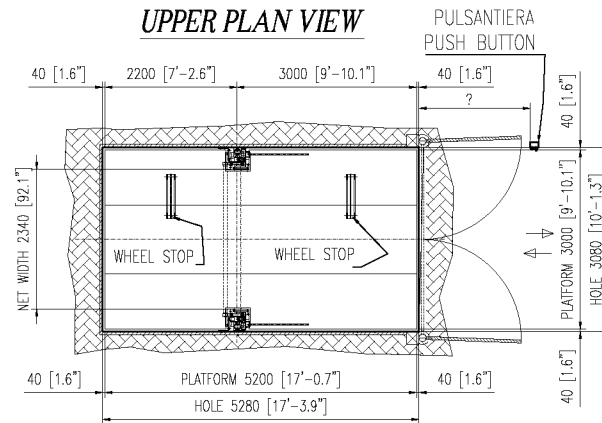


MOVE 30 N

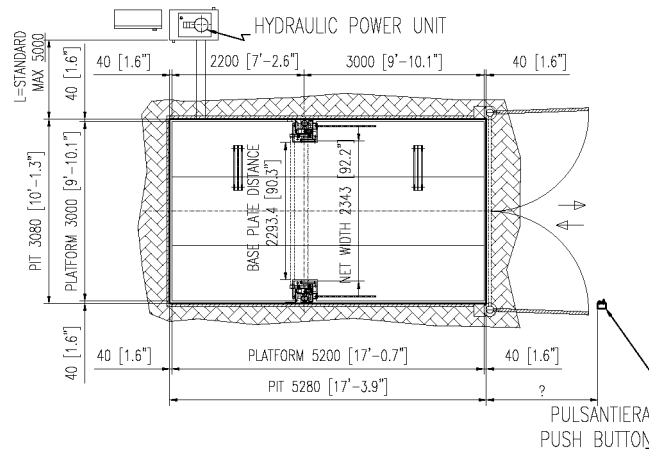
VISTA LATERALE
SIDE VIEW



PIANTA PIANO SUPERIORE
UPPER PLAN VIEW



PIANTA PIANO INFERIORE
LOWER PLAN VIEW



| | Capacity | Standard Lifting Height | Max Lifting Height | Minimum Platform | Standard Platform | Max Platform | Pit | Power | Speed | Power supply | Standard Weight | Notes |
|-----------|-----------|-------------------------|--------------------|------------------|-------------------|------------------|----------|--------|------------|---------------|-----------------|-------|
| MOVE 30 N | 4.000 kg. | 4.000 mm | 11.000 mm | 2.000x2.400 mm | 3.000x5.200 mm | 3.000x6.000 mm | 215 mm | 4 kw | 0,06 m/s | 400 v / 50 hz | 3.200 kg. | |
| | 6.608 lbs | 157,5 inch | 433,1 inch | 78,7x94,5 inch | 118,1x204,7 inch | 118,1x236,2 inch | 8,5 inch | 5,5 hp | 2,4 inch/s | 400 v / 50 hz | 7048 lbs | |

ACCESSORIES

■ STANDARD □ OPTIONAL

| DESCRIPTION | MOVE 30 N | Notes |
|--|-----------|---------------------------------|
| Standard Colors BLU RAL 5005 and SILVER RAL 9006 | ■ | |
| Nr. Nr. 2 columns complete with lifting cylinders and tooth rack | ■ | |
| Nr. 1 checker plate platform | ■ | |
| Nr. 1 torsion bar | ■ | |
| Nr. 2 "Dead man present" push button boards with key at floors | ■ | |
| Security control module for sensors and safety locks | ■ | |
| Nr. 1 hydraulic pump with motor | ■ | |
| Nr. 1 Electrical panel board | ■ | |
| Standard power supply 230-400 V/3Ph/50 - 460 V/3Ph/60 | ■ | |
| Nr. 1 slowing kit | ■ | |
| Standard height up to 4 mt. | ■ | |
| 2 stops | ■ | |
| Nr. 2 stopping wheel L=745 mm | ■ | |
| level locking mechanical devices | ■ | |
| Nylon Package | ■ | |
| Screws anchors | ■ | |
| Emergency push button board for pit access | ■ | |
| Reverse guides | □ | Advisable for tileable platform |
| travel over 4 mt. (each 500 mm.) | □ | Applicable up to max. H=11 mt. |
| Non standard platform | □ | See the technical data sheet |
| Additional stop (third stop) | □ | Suitable up to 6 Stops |

ACCESSORIES

■ STANDARD □ OPTIONAL

| DESCRIPTION | MOVE 30 N | Notes |
|---|--------------|---|
| Additional further Stop | □ | |
| Columns split in two or more pieces (each split) | □ | Verify accessibility of the shaft |
| Additional cost for speed increase (da 0,06 a 0,14 m/sec.) | □ | Applicable for cylinders with a rod from 65 mm up to a travel of 6.5 mt; advisable for travels over 4 mt |
| Additional cost for speed increase(da 0,04 a 0,10 m/sec.) | □ | Applicable for cylinders with a rod from 80 mm diameter up to a travel of 11 mt; advisable for travels over 4 mt. |
| Additional push button board | □ | |
| Additional push button board design style | □ | |
| Push button board in stainless steel | □ | |
| Safety lock for concertina and standard doors | □ | |
| additional key for pushbutton | □ | |
| Electrical supply for Kronenberg or Prudhomme | □ | |
| Additional Electromagnetic sensors | □ | |
| Outside pulse recall for each push button board | □ | Applicable just on enclosed shaft |
| Pulse command return to home position button (just with pulse manouver) | □ | Applicable just on enclosed shaft |
| Automatic repositioning to the floor in case of fire | □ | Applicable just on enclosed shaft |
| Remote control each receiver | □ | Max.ray 5 mt |
| remote control each transmitter | □ | Max.ray 5 mt |
| Flashing light | □ | |
| Siren | □ | |
| 2 colors trafic light (Red / Green) | □ | |
| 2 colors trafic light (Red / Green) design style | □ | |
| Soft Starter | □ | |
| Hydraulic pump with low acoustic emission | □ | On request |
| Hand pump kit | □ | |
| Back up battery for auxiliary circuits | □ | Allows emergency descent with platform not on floor |
| Waterproof galvanized cover for control unit for outdoor installation | □ | |
| Waterproof push button board IP 54 | □ | |

| DESCRIPTION | MOVE 30 N | Notes |
|---|-----------|--|
| Under platform set of 2 cylinders for stabilizing platform | □ | |
| Set of two anchoring frontal supports | □ | |
| Set of 2 anchoring floor supports | □ | |
| Nr. 1 fix handrail H=1.200 mm. (per meter) | □ | |
| Nr. 1 removable handrail H = 1.200 mm (per meter) | □ | |
| Fix external ramps in two pieces | □ | On request: verify with OMER installation mode |
| Long fix external ramp in one piece | □ | On request: verify with OMER installation mode |
| movable ramps on the platform in 2 pieces | □ | On request: verify with OMER installation mode |
| Nr. 2 Photocells barriers H=600 mm. for forward and backward control | □ | |
| Photocell barrier for doors' area control H= 150 mm | □ | |
| Photocell barrier for doors' area control H= 300 mm | □ | |
| Laser scanner for control area | □ | |
| Non standard power supply | □ | On request |
| Non standard colour* | □ | |
| Screws anchors for walls different than concrete | □ | On request |
| Hot dip galvanization (platform, columns and guides) | □ | |
| Hot dip galvanization over 4 Mt. (each 500 mm.) | □ | |
| Hot dip galvanization set of 2 anchoring frontal supports | □ | |
| Hot dip galvanization set of 2 anchoring floor supports | □ | |
| Hot dip galvanization for fix ramps in two pieces | □ | On request |
| Hot dip galvanization for movable ramps on the platform in two pieces | □ | On request |
| Hot dip galvanization of long fix ramp | □ | On request |
| Columns on pallet (nr.2) | □ | |
| tooth rack on pallet | □ | |
| Platform on pallet | □ | |
| Control panel crate | □ | |

Архангельск (8182)63-90-72
 Астана (7172)727-132
 Астрахань (8512)99-46-04
 Барнаул (3852)73-04-60
 Белгород (4722)40-23-64
 Брянск (4832)59-03-52
 Владивосток (423)249-28-31
 Волгоград (844)278-03-48
 Вологда (8172)26-41-59
 Воронеж (473)204-51-73
 Екатеринбург (343)384-55-89
 Иваново (4932)77-34-06

Ижевск (3412)26-03-58
 Иркутск (395)279-98-46
 Казань (843)206-01-48
 Калининград (4012)72-03-81
 Калуга (4842)92-23-67
 Кемерово (3842)65-04-62
 Киров (8332)68-02-04
 Краснодар (861)203-40-90
 Красноярск (391)204-63-61
 Курск (4712)77-13-04
 Липецк (4742)52-20-81
 Киргизия (996)312-96-26-47

Магнитогорск (3519)55-03-13
 Москва (495)268-04-70
 Мурманск (8152)59-64-93
 Набережные Челны (8552)20-53-41
 Нижний Новгород (831)429-08-12
 Новокузнецк (3843)20-46-81
 Новосибирск (383)227-86-73
 Омск (3812)21-46-40
 Орел (4862)44-53-42
 Оренбург (3532)37-68-04
 Пенза (8412)22-31-16
 Россия (495)268-04-70

Пермь (342)205-81-47
 Ростов-на-Дону (863)308-18-15
 Рязань (4912)46-61-64
 Самара (846)206-03-16
 Санкт-Петербург (812)309-46-40
 Саратов (845)249-38-78
 Севастополь (8692)22-31-93
 Симферополь (3652)67-13-56
 Смоленск (4812)29-41-54
 Сочи (862)225-72-31
 Ставрополь (8652)20-65-13
 Казахстан (772)734-952-31

Сургут (3462)77-98-35
 Тверь (4822)63-31-35
 Томск (3822)98-41-53
 Тула (4872)74-02-29
 Тюмень (3452)66-21-18
 Ульяновск (8422)24-23-59
 Уфа (347)229-48-12
 Хабаровск (4212)92-98-04
 Челябинск (351)202-03-61
 Череповец (8202)49-02-64
 Ярославль (4852)69-52-93