

Архангельск (8182)63-90-72
Астана (7172)727-132
Астрахань (8512)99-46-04
Барнаул (3852)73-04-60
Белгород (4722)40-23-64
Брянск (4832)59-03-52
Владивосток (423)249-28-31
Волгоград (844)278-03-48
Вологда (8172)26-41-59
Воронеж (473)204-51-73
Екатеринбург (343)384-55-89
Иваново (4932)77-34-06

Ижевск (3412)26-03-58
Иркутск (395)279-98-46
Казань (843)206-01-48
Калининград (4012)72-03-81
Калуга (4842)92-23-67
Кемерово (3842)65-04-62
Киров (8332)68-02-04
Краснодар (861)203-40-90
Красноярск (391)204-63-61
Курск (4712)77-13-04
Липецк (4742)52-20-81
Киргизия (996)312-96-26-47

Магнитогорск (3519)55-03-13
Москва (495)268-04-70
Мурманск (8152)59-64-93
Набережные Челны (8552)20-53-41
Нижний Новгород (831)429-08-12
Новокузнецк (3843)20-46-81
Новосибирск (383)227-86-73
Омск (3812)21-46-40
Орел (4862)44-53-42
Оренбург (3532)37-68-04
Пенза (8412)22-31-16
Россия (495)268-04-70

Пермь (342)205-81-47
Ростов-на-Дону (863)308-18-15
Рязань (4912)46-61-64
Самара (846)206-03-16
Санкт-Петербург (812)309-46-40
Саратов (845)249-38-78
Севастополь (8692)22-31-93
Симферополь (3652)67-13-56
Смоленск (4812)29-41-54
Сочи (862)225-72-31
Ставрополь (8652)20-65-13
Казахстан (772)734-952-31

Сургут (3462)77-98-35
Тверь (4822)63-31-35
Томск (3822)98-41-53
Тула (4872)74-02-29
Тюмень (3452)66-21-18
Ульяновск (8422)24-23-59
Уфа (347)229-48-12
Хабаровск (4212)92-98-04
Челябинск (351)202-03-61
Череповец (8202)49-02-64
Ярославль (4852)69-52-93

<https://omer.nt-rt.ru> || orw@nt-rt.ru





INDEPENDENT
DOUBLE
STACKER WITH PIT

SPACER 25/2



SPACER 25/2

The double parking stacker Spacer 25/2 is equipped with a torsion bar, which is located in the frame of the first platform. This function will stabilize the weight on the platform when the car is in parked mode which ever way round the car is pointing with the weight of the engine.

THE SEQUENCE

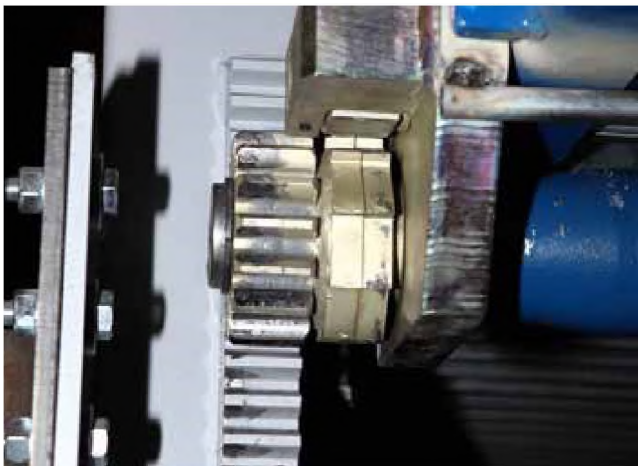
of photographs clearly shows how the cars are managed and how practical this parking system is.





SPACER 25/2

has a hydraulically operated mechanical block at the top of the column able to ensure platform safety at all times.



THE TORSION BAR

is equipped with four pinion gears (two at each end) that have very specific functions. The pinion outer will slide the bar on the rack, while the inside pinion is part of the locking mechanism for safety purposes as standard.

A steel safety gear, electrically interlocked, rests on the internal toothed pinion, so that in the event of sudden release of the button or movement, the platform will lock safely mechanically.





ALL WIRING

for the machine are protected by a PVC catenary which protects from possible crushing electric cables during the movement of the machine, ensuring a degree of overall safety and safeguard for the electrical system.



ALL WIRING

for the electric motor, hydraulic pump, oil tank and hand pump(standard) are already installed on the machine. This application means it is not necessary for a motor room,with a

considerable saving of space and additional motor room costs. Furthermore, it facilitates, in a very practical way, quick access for repairs and maintenance to the platform.

THE SPACER 25/2 PLATFORM

was designed to be highly ergonomic for easy access by any user (designed for the disabled).

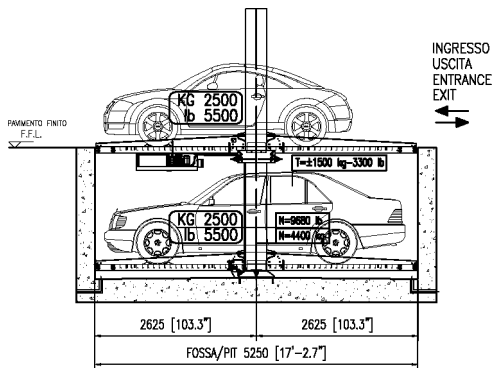
The staves that constitute the product, are all galvanized and formed

in such a way that their joint do not allow the drip below of substances that might soil or damage whatever is at the lower level.

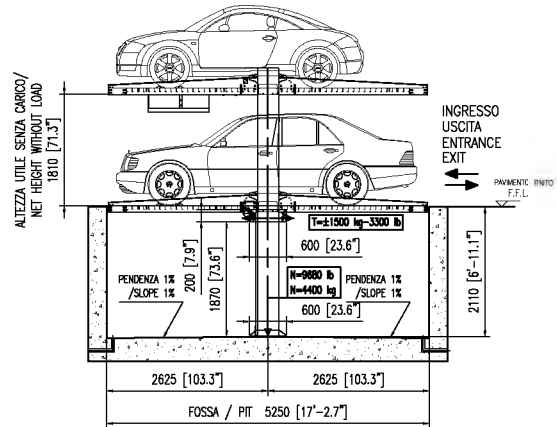


SPACER 25/2

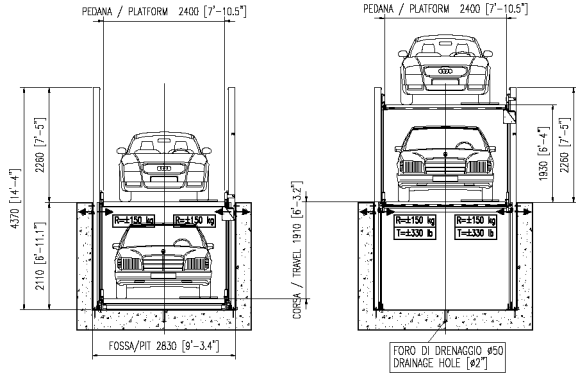
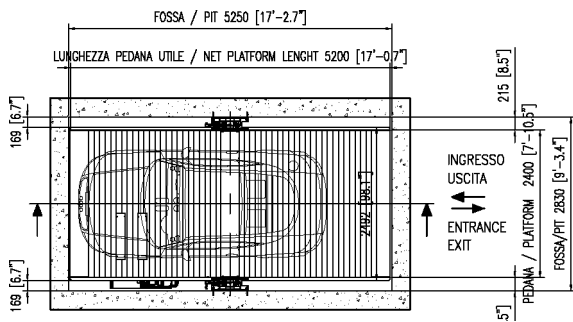
SEZIONE / SECTION



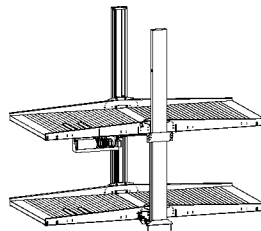
SEZIONE / SECTION



VISTA IN PIANTA / PLANT VIEW



LARGHEZZA PEDANA PLATFORM WIDTH		LARGHEZZA FOSSA PIT WIDTH	
mm	feet	mm	feet
2300	7'-6.6"	2730	8'-11.5"
2400	7'-10.5"	2830	9'-3.4"
2500	8'-2.4"	2930	9'-7.4"
2600	8'-6.4"	3030	9'-11.3"



SPACER 25/2 - PLATFORM 2400x5200

4018070000

	Capacity	Standard Lifting Height	Standard Platform	Net height	Pit	Power	Ascent / descent time	Power supply	Standard Weight	Notes
SPACER 25/2	2x2500 kg.	1910 mm	2300 x 5200 mm	1810 mm	2110 mm	3 kw	64 / 64 s	400 v / 50 hz	2300 kg.	
	2x5512 lbs	75,2 inch	90,5x204,7 inch	71,3 inch	83,1 inch	5,5 hp	64 / 64 s	400 v / 50 hz	5066 lbs	
SPACER 25/2	2x2500 kg.	1910 mm	2400 x 5200 mm	1810 mm	2110 mm	3 kw	64 / 64 s	400 v / 50 hz	2400 kg.	
	2x5512 lbs	75,2 inch	94,5x204,7 inch	71,3 inch	83,1 inch	5,5 hp	64 / 64 s	400 v / 50 hz	5286 lbs	
SPACER 25/2	2x2500 kg.	1910 mm	2500 x 5200 mm	1810 mm	2110 mm	3 kw	64 / 64 s	400 v / 50 hz	2500 kg.	
	2x5512 lbs	75,2 inch	98,4x204,7 inch	71,3 inch	83,1 inch	5,5 hp	64 / 64 s	400 v / 50 hz	5507 lbs	
SPACER 25/2	2x2500 kg.	1910 mm	2600 x 5200 mm	1810 mm	2110 mm	3 kw	64 / 64 s	400 v / 50 hz	2600 kg.	
	2x5512 lbs	75,2 inch	90,5x102,4 inch	71,3 inch	83,1 inch	5,5 hp	64 / 64 s	400 v / 50 hz	5727 lbs	

ACCESSORIES

■ STANDARD □ OPTIONAL

DESCRIPTION	SPACER 25/2	Notes
Standard colors: BLU RAL 5005 and SILVER RAL 7040	■	
Nr. Nr. 2 columns complete with lifting cylinders	■	
Nr. 2 platforms with electrostatics galvanized smooth staves	■	
Nr. 1 torsion bar	■	
Nr. 1 "Dead man present" push button board with key	■	
Nr. 1 Electrical panel with differential switch	■	
Nr. 1 hydraulic pump with motor	■	
Standard power supply 230-400 V/3Ph/50 - 460 V/3Ph/60	■	
Standard clearance between platforms H=1.810 mm.	■	
Nr. 8 stopping wheels L=745 mm		
level locking mechanical devices	■	
Safety Electromechanical locks	■	
Nylon Package	■	
Hand pump kit	■	
screws anchor	■	
Clearance between platform H=2110 mm.	□	
Additional push button board	□	
Security control module for sensors and safety locks	□	
Electro magnetic sensor	□	
Electro mechanical lock	□	
Flashing light	□	
Audible warning kit	□	
2 colors trafic light (Red / Green)	□	
2 colors trafic light (Red / Green) design style	□	
Waterproof galvanized cover for control unit for outdoor installation	□	
Waterproof push button board IP 54	□	
Push button board in stainless steel	□	
UL certificated system	□	

Архангельск (8182)63-90-72
 Астана (7172)727-132
 Астрахань (8512)99-46-04
 Барнаул (3852)73-04-60
 Белгород (4722)40-23-64
 Брянск (4832)59-03-52
 Владивосток (423)249-28-31
 Волгоград (844)278-03-48
 Вологда (8172)26-41-59
 Воронеж (473)204-51-73
 Екатеринбург (343)384-55-89
 Иваново (4932)77-34-06

Ижевск (3412)26-03-58
 Иркутск (395)279-98-46
 Казань (843)206-01-48
 Калининград (4012)72-03-81
 Калуга (4842)92-23-67
 Кемерово (3842)65-04-62
 Киров (8332)68-02-04
 Краснодар (861)203-40-90
 Красноярск (391)204-63-61
 Курск (4712)77-13-04
 Липецк (4742)52-20-81
 Киргизия (996)312-96-26-47

Магнитогорск (3519)55-03-13
 Москва (495)268-04-70
 Мурманск (8152)59-64-93
 Набережные Челны (8552)20-53-41
 Нижний Новгород (831)429-08-12
 Новокузнецк (3843)20-46-81
 Новосибирск (383)227-86-73
 Омск (3812)21-46-40
 Орел (4862)44-53-42
 Оренбург (3532)37-68-04
 Пенза (8412)22-31-16
 Россия (495)268-04-70

Пермь (342)205-81-47
 Ростов-на-Дону (863)308-18-15
 Рязань (4912)46-61-64
 Самара (846)206-03-16
 Санкт-Петербург (812)309-46-40
 Саратов (845)249-38-78
 Севастополь (8692)22-31-93
 Симферополь (3652)67-13-56
 Смоленск (4812)29-41-54
 Сочи (862)225-72-31
 Ставрополь (8652)20-65-13
 Казахстан (772)734-952-31

Сургут (3462)77-98-35
 Тверь (4822)63-31-35
 Томск (3822)98-41-53
 Тула (4872)74-02-29
 Тюмень (3452)66-21-18
 Ульяновск (8422)24-23-59
 Уфа (347)229-48-12
 Хабаровск (4212)92-98-04
 Челябинск (351)202-03-61
 Череповец (8202)49-02-64
 Ярославль (4852)69-52-93