

Архангельск (8182)63-90-72
Астана (7172)727-132
Астрахань (8512)99-46-04
Барнаул (3852)73-04-60
Белгород (4722)40-23-64
Брянск (4832)59-03-52
Владивосток (423)249-28-31
Волгоград (844)278-03-48
Вологда (8172)26-41-59
Воронеж (473)204-51-73
Екатеринбург (343)384-55-89
Иваново (4932)77-34-06

Ижевск (3412)26-03-58
Иркутск (395)279-98-46
Казань (843)206-01-48
Калининград (4012)72-03-81
Калуга (4842)92-23-67
Кемерово (3842)65-04-62
Киров (8332)68-02-04
Краснодар (861)203-40-90
Красноярск (391)204-63-61
Курск (4712)77-13-04
Липецк (4742)52-20-81

Киргизия (996)312-96-26-47

Магнитогорск (3519)55-03-13
Москва (495)268-04-70
Мурманск (8152)59-64-93
Набережные Челны (8552)20-53-41
Нижний Новгород (831)429-08-12
Новокузнецк (3843)20-46-81
Новосибирск (383)227-86-73
Омск (3812)21-46-40
Орел (4862)44-53-42
Оренбург (3532)37-68-04
Пенза (8412)22-31-16

Россия (495)268-04-70

Пермь (342)205-81-47
Ростов-на-Дону (863)308-18-15
Рязань (4912)46-61-64
Самара (846)206-03-16
Санкт-Петербург (812)309-46-40
Саратов (845)249-38-78
Севастополь (8692)22-31-93
Симферополь (3652)67-13-56
Смоленск (4812)29-41-54
Сочи (862)225-72-31
Ставрополь (8652)20-65-13

Казахстан (772)734-952-31

Сургут (3462)77-98-35
Тверь (4822)63-31-35
Томск (3822)98-41-53
Тула (4872)74-02-29
Тюмень (3452)66-21-18
Ульяновск (8422)24-23-59
Уфа (347)229-48-12
Хабаровск (4212)92-98-04
Челябинск (351)202-03-61
Череповец (8202)49-02-64
Ярославль (4852)69-52-93

<https://omer.nt-rt.ru> || orw@nt-rt.ru



INDEPENDENT
DOUBLE
STACKER WITH PIT

DUPLO





DUPLO COMES

in three versions: Duplo 30 T, Duplo 25/2 and Duplo 20/2 T.

The entire machine is fully galvanized, both parking platform and roof.

Ideal for outdoor installation such as in gardens or garage access zones, Duplo can double up parking spaces or hide vehicles completely underground, keeping the residential space free of clutter.





THE PLATFORM

can also be used for full size vehicles or those with a long wheel base. Easy parking is one of the main prerogatives of the Duplo line.

THE ROOF HAS AN ACCESS HATCH

for maintenance, control and emergency access. This opening makes inspection easier, even during closed parking of unit.



THE UNIT HAS TWO TORSION BARS,

one for each pair of columns, located on the short sides. In this case the torsion bars are part of the system of equalizing chains that ensure perfect alignment of the machine, preventing any tilting during movement.



THE DETAIL SHOWS

that the system of chains is doubled for each long side of the unit, engaging completely around the notched torsion bar pinion. By keeping the chains under tension, the system cannot tilt.



AS A WHOLE,

the system of chains makes the unit perfectly safe against any problems that could affect stability.

THE UNIT ALSO HAS

an electromagnetic rack connection block that sets the unit in safety mode at any height.

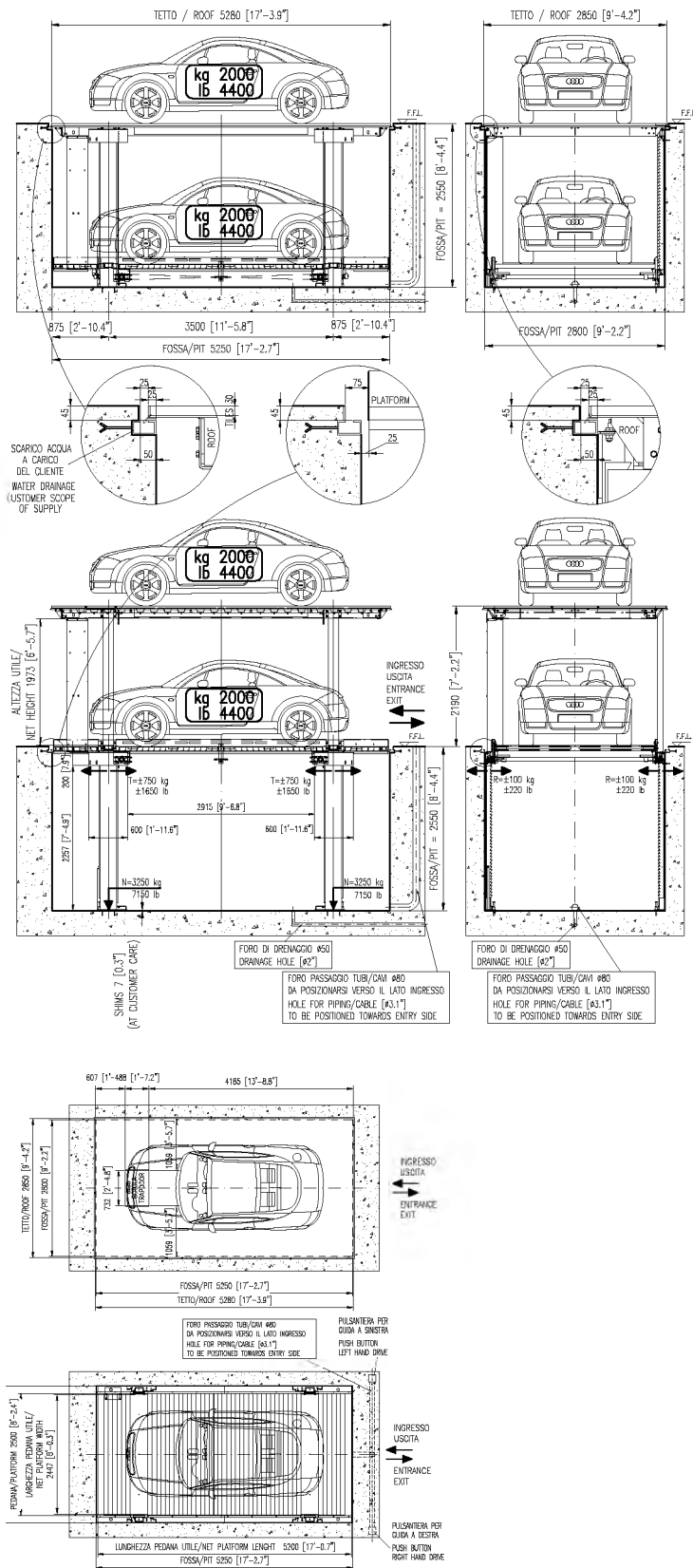
Each column has this system.

The most obvious result of this is that the vehicle/s positioned on the platforms is/are absolutely safe.



DUPLO

DUPLO 20-2 T



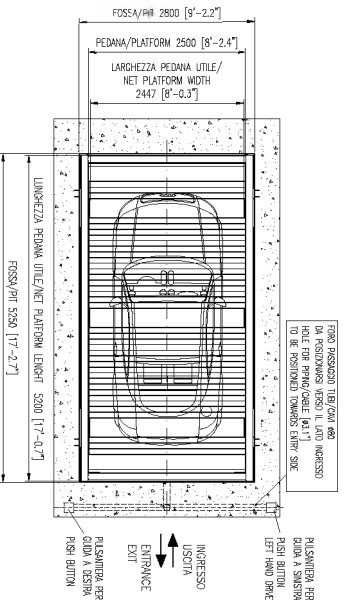
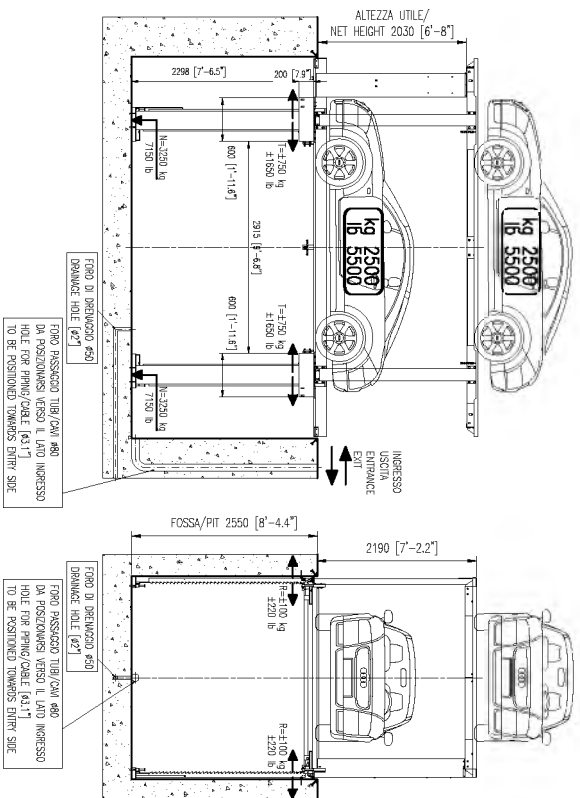
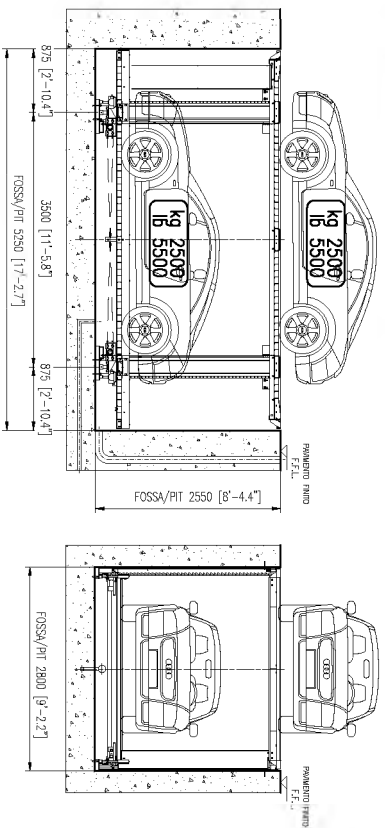
PEDANA (mm) PLATFORM (feet)	FOSSA (mm) PIT (feet)	LARGHEZZA PEDANA UTILE/ NET PLATFORM WIDTH (mm-feet)
2200 / 7'-2.6"	2500 / 8'-2.4"	2147 / 7'-0.5"
2500 / 8'-2.4"	2800 / 9'-2.2"	2447 / 8'-0.3"
2700 / 8'-10.3"	3000 / 9'-10.1"	2647 / 8'-8.2"

DUPLO 20-2 T – PEDANA/PLATFORM 2500x5200 – CENTRI, DX

4016050340_E

DUPLO

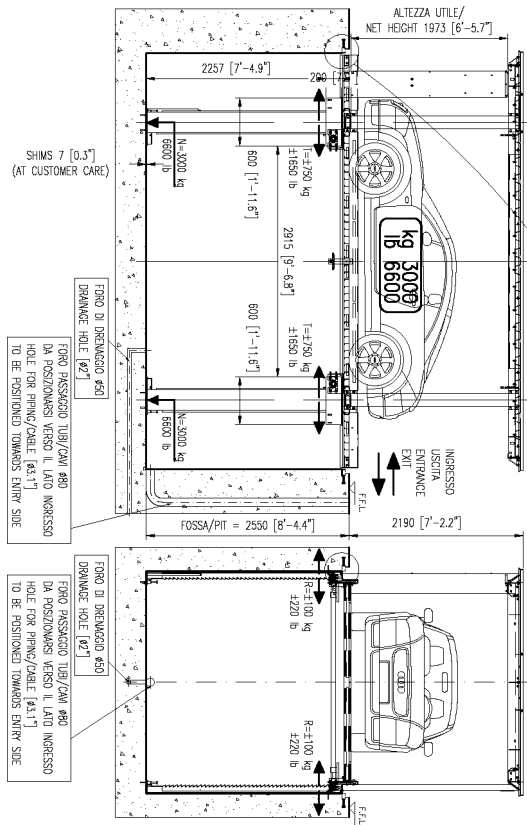
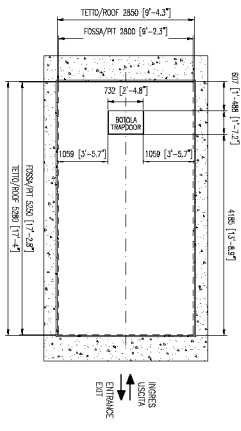
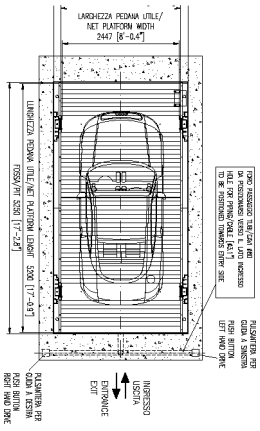
DUPLO 25-2 T



PEDANA / PLATFORM (mm) / (feet)	FOSSA / PIT (mm) / (feet)	LARGHEZZA / NET PLATFORM WIDTH (mm-feet)
2200 / 7'-2.6"	2300 / 8'-2.4"	2147 / 7'-0.5"
2500 / 8'-2.4"	2500 / 8'-2.2"	2447 / 8'-0.3"
2700 / 8'-10.3"	3000 / 9'-10.1"	2647 / 8'-8.2"

4016050400_A

DUPLO 25/2



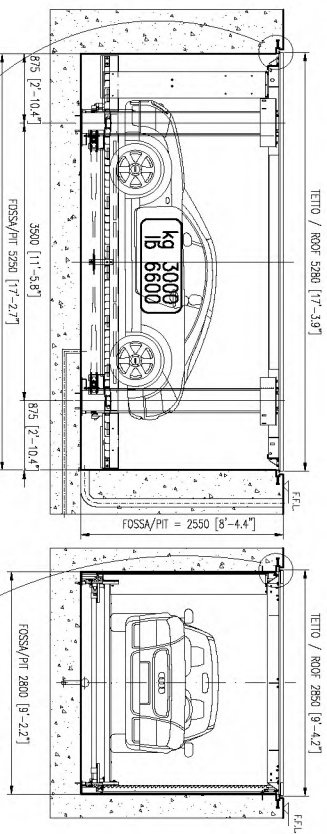
PEDANA (mm) PLATFORM (feet)	FSSSA (mm) PT (feet)	LARGHEZZA PEDANA UTILE/ NET PLATFORM WIDTH (mm-1650)
2200 / 7'-2.6"	2500 / 8'-2.4"	2147 / 7'-0.5"
2500 / 8'-2.4"	2800 / 9'-2.2"	2447 / 8'-0.3"
2700 / 8'-10.3"	3000 / 9'-10.1"	2647 / 8'-8.2"

DUPLO 30T - PEDANA/PLATFORM 2500x3200 - CENTR.L. DX

4016050130_E

DUPLO

DUPLO 30 T



	Capacity	Standard Lifting Height	Max Lifting Height	Minimum Platform	Standard Platform	Max Platform	Platform distance	Pit	Power	Speed	Power supply	Standard Weight	Notes
DUPLO 30T	3.000 kg.	2.190 mm	2.190 mm	2.200x5.200 mm	2.500 x 5.200 mm	2.700x5.200 mm	2.010 mm	2.500 mm	2,5 kw	0,03 m/s	400 v / 50 hz	2.850 kg.	tileable roof; max 70 kg/m ²
	6.608 lbs	86,2 inch	86,2 inch	86.6x204.7 inch	98.4x204.7 inch	106.3x204.7 inch	79,1 inch	79,1 inch	3,4 hp	1,2 inch/s	400 v / 50 hz	6.278 lbs	tiles on the roof up to 70 kg/m ²
DUPLO 25/2	2.500 + 2.500 kg.	2.190 mm	2.190 mm	2.200x5.200 mm	2.500 x 5.200 mm	2.700x5.200 mm	2.100 mm	2.500 mm	2,5 kw	0,03 m/s	400 v / 50 hz	2.850 kg.	two platforms with two cars
	5.510 + 5.510 lbs	86,2 inch	86,2 inch	86.6x204.7 inch	98.4x204.7 inch	106.3x204.7 inch	82,7 inch	79,1 inch	3,4 hp	1,2 inch/s	400 v / 50 hz	6.278 lbs	two platforms for two cars
DUPLO 20/2T	2.000 + 2.000 kg.	2.190 mm	2.190 mm	2.200x5.200 mm	2.500 x 5.200 mm	2.700x5.200 mm	2.010 mm	2.500 mm	2,5 kw	0,03 m/s	400 v / 50 hz	2.850 kg.	platform + tileable roof with two cars
	4.410 + 4.410 lbs	86,2 inch	86,2 inch	86.6x204.7 inch	98.4x204.7 inch	106.3x204.7 inch	79,1 inch	79,1 inch	3,4 hp	1,2 inch/s	400 v / 50 hz	6.278 lbs	platform + tiles on the roof up to 70 kg/m ²

ACCESSORIES

■ STANDARD □ OPTIONAL

DESCRIPTION	DUPLO 20/2 T	DUPLO 25/2	DUPLO 30 T	Notes
Standard colors: BLU RAL 5005 and SILVER RAL 7040	■	■	■	
Loading capacity 3000 kg on the platform with roof with tiles	■			Tileable roof (max 70 kg/m ²)
Loading capacity 2.500 Kg (each platform)		■		
Loading capacity 2.000 Kg (each platform)			■	Tileable roof (max 70 kg/m ²)
Nr. 4 telescopic electro-hydraulic columns platform lift	■	■	■	
Nr. 4 electro magnetic locking stoppers at the level	■	■	■	
Nr. 2 platforms with electrostatics galvanized smooth staves		■		
Cover roof tileable predisposition	■		■	
Cover transitable roof	■		■	
Complete hot dip galvanized structure	■	■	■	
Mechanical compensation with pins and chains	■	■	■	
Nr.4 cylinders with parachute valve	■	■	■	
Nr 4 safety electro mechanical locks	■	■	■	
1 dead man push button board with key	■	■	■	
Nr. 1 Electrical panel board	■	■	■	
Nr. 1 hydraulic pump with motor	■	■	■	
Nylon Package	■	■	■	
screws anchor	■	■	■	
Standard power supply 230-400 V/3Ph/50 - 460 V/3Ph/60	■	■	■	
Non standard power supply 220V/1Ph/50-60Hz	□	□	□	
Non standard power supply	□	□	□	On request
Flashing light	□	□	□	
Audible warning kit	□	□	□	
Internal lighting led device in low voltage	□	□	□	
Nr. 2 Photocells barriers car control forward backward H = 600 mm	□	□	□	
Nr. 2Photocells control car's presence on the roof	□		□	
Waterproof push button board IP 54	□	□	□	

Архангельск (8182)63-90-72
 Астана (7172)727-132
 Астрахань (8512)99-46-04
 Барнаул (3852)73-04-60
 Белгород (4722)40-23-64
 Брянск (4832)59-03-52
 Владивосток (423)249-28-31
 Волгоград (844)278-03-48
 Вологда (8172)26-41-59
 Воронеж (473)204-51-73
 Екатеринбург (343)384-55-89
 Иваново (4932)77-34-06

Ижевск (3412)26-03-58
 Иркутск (395)279-98-46
 Казань (843)206-01-48
 Калининград (4012)72-03-81
 Калуга (4842)92-23-67
 Кемерово (3842)65-04-62
 Киров (8332)68-02-04
 Краснодар (861)203-40-90
 Красноярск (391)204-63-61
 Курск (4712)77-13-04
 Липецк (4742)52-20-81
 Киргизия (996)312-96-26-47

Магнитогорск (3519)55-03-13
 Москва (495)268-04-70
 Мурманск (8152)59-64-93
 Набережные Челны (8552)20-53-41
 Нижний Новгород (831)429-08-12
 Новокузнецк (3843)20-46-81
 Новосибирск (383)227-86-73
 Омск (3812)21-46-40
 Орел (4862)44-53-42
 Оренбург (3532)37-68-04
 Пенза (8412)22-31-16
 Россия (495)268-04-70

Пермь (342)205-81-47
 Ростов-на-Дону (863)308-18-15
 Рязань (4912)46-61-64
 Самара (846)206-03-16
 Санкт-Петербург (812)309-46-40
 Саратов (845)249-38-78
 Севастополь (8692)22-31-93
 Симферополь (3652)67-13-56
 Смоленск (4812)29-41-54
 Сочи (862)225-72-31
 Ставрополь (8652)20-65-13
 Казахстан (772)734-952-31

Сургут (3462)77-98-35
 Тверь (4822)63-31-35
 Томск (3822)98-41-53
 Тула (4872)74-02-29
 Тюмень (3452)66-21-18
 Ульяновск (8422)24-23-59
 Уфа (347)229-48-12
 Хабаровск (4212)92-98-04
 Челябинск (351)202-03-61
 Череповец (8202)49-02-64
 Ярославль (4852)69-52-93